

# ਬਾਬਾ ਫਰੀਦ ਯੂਨੀਵਰਸਿਟੀ ਆੱਫ ਹੀਲਥ ਸਾਇੰਸਜ਼, ਫਰੀਦਕੋਟ

03.ਬੀ.ਐਫ. ਯੂ. ਐਚ. ਐਸ./2023/844

ਮਿਤੀ: 13/08/2023

## ਜਨਤਕ ਨੋਟਿਸ

ਬਾਬਾ ਫਰੀਦ ਯੂਨੀਵਰਸਿਟੀ ਆੱਫ ਹੀਲਥ ਸਾਇੰਸਜ਼, ਫਰੀਦਕੋਟ ਵੱਲੋਂ BSc. Nursing (PPMET-2023) ਦੇ ਦਾਖਲਿਆਂ ਲਈ ਮਿਤੀ 13-08-2023 ਦਿਨ ਐਤਵਾਰ (Sunday) ਨੂੰ ਪ੍ਰਵੇਸ਼ ਪ੍ਰੀਖਿਆ ਪੰਜਾਬ ਦੇ ਵੱਖ-ਵੱਖ ਜਿਲਿਆਂ ਵਿੱਖੇ ਪ੍ਰੀਖਿਆ ਕੇਂਦਰ ਬਣਾ ਕੇ ਕਰਵਾਈ ਗਈ ਸੀ। ਇਸ ਪੇਪਰ ਦੀ Answer Key/Question Booklet ਯੂਨੀਵਰਸਿਟੀ ਦੀ ਵੈਬ ਸਾਈਟ [www.bfuhs.ac.in](http://www.bfuhs.ac.in) ਤੇ ਅਪਲੋਡ ਕਰ ਦਿੱਤੀ ਗਈ ਹੈ, ਜੇਕਰ ਕਿਸੇ ਵੀ ਉਮੀਦਵਾਰ ਨੂੰ Answer Key ਸਬੰਧੀ ਕੋਈ ਇਤਰਾਜ਼ ਹੋਵੇ ਤਾਂ ਉਹ ਉਮੀਦਵਾਰ ਆਪਣੀ login id ਤੇ ਆਪਣਾ ਇਤਰਾਜ਼ ਮਿਤੀ 15-08-2023 ਤੱਕ ਜਮਾਂ ਕਰਵਾ ਸਕਦੇ ਹਨ। ਇਸ ਤੋਂ ਇਲਾਵਾ ਕਿਸੇ ਹੋਰ email id ਤੇ ਜਾਂ ਕਿਸੇ ਹੋਰ ਤਰੀਕੇ ਨਾਲ ਕੀਤਾ ਗਿਆ ਇਤਰਾਜ਼ ਵਿਚਾਰਿਆ ਨਹੀਂ ਜਾਵੇਗਾ।

ਉਪਰੋਕਤ ਦਿੱਤੇ ਗਏ ਸਮੇਂ ਤੋਂ ਬਾਅਦ ਵਿੱਚ ਪ੍ਰਾਪਤ ਹੋਏ ਇਤਰਾਜ਼ ਵਿਚਾਰੇ ਨਹੀਂ ਜਾਣਗੇ ਅਤੇ ਪ੍ਰਾਪਤ ਹੋਏ ਇਤਰਾਜ਼ਾਂ ਦਾ ਨਿਪਟਾਰਾ ਕਰਨ ਤੋਂ ਬਾਅਦ ਉਪਰੋਕਤ ਪ੍ਰੀਖਿਆ ਦਾ ਨਤੀਜਾ ਘੋਸ਼ਿਤ ਕੀਤਾ ਜਾਵੇਗਾ।

ਨੋਟ: ਡਾਕ ਰਾਹੀਂ ਪ੍ਰਾਪਤ ਹੋਏ ਇਤਰਾਜ਼ ਪ੍ਰਵਾਨ ਨਹੀਂ ਕੀਤੇ ਜਾਣਗੇ।



*S.P.Singh*  
ਰਜਿਸਟਰਾਰ

ANSWER KEY PPMET 2023 *BFUHS*

1	A	51	C
2	D	52	C
3	A	53	D
4	C	54	B
5	C	55	D
6	D	56	D
7	C	57	C
8	C	58	B
9	A	59	C
10	C	60	C
11	A	61	A
12	A	62	C
13	D	63	D
14	B	64	B
15	D	65	B
16	D	66	B
17	A	67	C
18	A	68	A
19	D	69	D
20	D	70	C
21	D	71	B
22	B	72	C
23	D	73	A
24	A	74	B
25	A	75	A
26	D	76	D
27	A	77	B
28	B	78	C
29	A	79	D
30	A	80	A
31	B	81	B
32	B	82	D
33	B	83	D
34	C	84	B
35	C	85	A
36	B	86	C
37	A	87	D
38	A	88	A
39	A	89	D
40	A	90	D
41	D	91	A
42	B	92	D
43	C	93	C
44	B	94	B
45	D	95	A
46	B	96	D
47	A	97	A
48	C	98	A
49	B	99	B
50	B	100	D





# BABA FARID UNIVERSITY OF HEALTH SCIENCES, FARIDKOT

**BSc. NURSING (PPMET) 2023**

QUESTION BOOKLET NO

--	--	--	--	--	--	--	--	--	--

OMR ANSWER SHEET NO

--	--	--	--	--	--	--	--	--	--

ROLL NO:

--	--	--	--	--	--	--	--	--	--

FULL SIGNATURE OF INVIGILATOR

THUMB IMPRESSION OF THE CANDIDATE

FULL SIGNATURE OF THE CANDIDATE

FULL SIGNATURE OBSERVER

Time Allowed: 2.00 Hours (11.00 AM to 1.00 PM)

Maximum Marks: 400

1. Use BLACK FINE TIP BALL PEN only. Use of pencil is not allowed.
2. Write your Roll number on the OMR answer-sheet and also on the question-booklet only in the space provided for the purpose and at no other place in the question booklets and Answer-sheet
3. Enter the Question Booklet Set and Number on the OMR Answer-sheet and also darken the corresponding bubbles with BLACK FINE TIP BALL PEN.
4. Do not put any marks anywhere in the Question booklet /on the OMR Answer-sheet.
5. **There are 100 objective type questions in all of 4 Marks each.** Before attempting the questions, check that the Question-booklet is complete. In case any question/part of question or page is missing, inform the Centre Superintendent within 5 minutes of the start of the examination. After that no claim will be entertained.
6. **Each question is followed by four alternative responses listed as A), B), C) and D) out of which only one is correct / most correct.** In case, all the ovals are left blank, there will be **deduction of marks @ 1 mark for each such unattempted question. Fifth oval 'E' (introduced for security purpose) is to be darkened in case you do not want to attempt the question to avoid negative marking.**
7. To open the question booklet, remove the seal gently when asked to do so. Handover the OMR Answer-sheet to the officer on duty on the completion of the time before you leave the examination hall.
8. **The candidates are permitted to carry his/her question booklet after completion of the examination but OMR Sheets are compulsory required to be deposited with the invigilator.**
9. A candidate who create disturbance of any kind or changes his/her seat or is found in possession of any paper possibility of any assistance to him/her or unfair means will be expelled from the examination by the Centre superintendent/Observer, whose decision shall be final. ("Expulsion" for this purpose would mean cancellation of the entire examination of the candidate).
10. **THE CANDIDATES ARE NOT PERMITTED TO CARRY ANY TELECOMMUNICATION EQUIPMENT SUCH AS WATCH, CELLULAR PHONE, WIRELESS SET, SCANNER ETC. INSIDE THE EXAMINATION HALL.**
11. For rough work, use only the blank space of the Question booklet.
12. The candidates will not be allowed to leave the examination hall during the examination.
13. Borrowing any material is not allowed.
14. The answer-sheet is designed for Computer evaluation. If the instructions are not followed properly, the candidate alone shall be responsible for the resultant loss.
15. Smoking/Refreshment shall not be allowed in the Entrance Test Centre/Hall.
16. Male candidates shall affix their Left Thumb Impression (LTI) while Female candidates shall affix Right Thumb Impression (RTI) at the prescribed place on the OMR answer sheet. Question Booklet and attendance sheet. The Centre superintendent shall also obtain and retain it for record.
17. The candidate must fill both the question booklet number and OMR answer sheet number on the attendance sheet.
18. No candidate shall be allowed to leave the centre before **1.00 PM.**



- Barriers of communication are except
  - Lack of privacy
  - Speech defects
  - Peaceful environment
  - Lack of interest
- An agent that has the power to kill bacteria
  - Antiseptic
  - Bacteriostasis
  - Bacteriostat
  - Bactericide
- The important aspect of aseptic techniques is
  - Hand washing
  - Gown techniques
  - Use mask
  - Use of gloves
- An agent which kills pathogenic bacteria is called
  - Fomite
  - Asepsis
  - Disinfectant
  - Bacteriostat
- Most reliable method of measuring body temperature is
  - Oral
  - Axillary
  - Rectal
  - Elbow
- Digestion word means
  - Burning of food
  - Oxidation of food
  - Hydrolysis of food
  - Breakdown of food
- Arthritis is the disease of
  - Skin
  - Kidney
  - joints
  - liver
- The meaning of barrier nursing is
  - to destroy pathogens
  - to develop resistance against pathogen
  - to restrain pathogen to a known limited space
  - None of the above
- Which out the following does not help in disinfecting water?
  - Filtration
  - Chlorine tablets
  - Alum
  - Boiling
- Which of the following is a recommended method for sterilizing surgical instruments?
  - Wiping with alcohol
  - Cleaning with soap and water
  - Autoclaving
  - Soaking in disinfectant solution
- The process of conversion of excess of carbohydrates into fat is known as
  - Lipogenesis
  - Glycogenolysis
  - Glycogenesis
  - None of these

- The keratomalacia is caused due to the deficiency of
  - Vitamin A
  - Vitamin B1
  - Vitamin B12
  - Vitamin K
- Calcium deficiency in the body occurs in the absence of
  - Vitamin B
  - Vitamin E
  - Vitamin C
  - Vitamin D
- Which part of the brain is associated with hearing?
  - Occipital lobe
  - Temporal lobe
  - Parietal lobe
  - Frontal lobe
- Goitre occurs because of deficiency of which substance in diet?
  - Sodium
  - Magnesium
  - Calcium
  - Iodine
- Which of the following is not a Biomedical waste?
  - Animal waste
  - Microbiological waste
  - Chemical waste
  - Domestic waste
- The upper chambers of heart are known as
  - Atria
  - Ventricles
  - SA node
  - AV node
- O positive blood group not available in blood bank, which blood group may be given to patient
  - Negative
  - AB positive
  - A positive
  - B Positive
- Which of the following area has the lowest chance of producing a biomedical waste?
  - Hospitals
  - Clinics
  - Laboratories
  - Agricultural land
- Which of the following nutrients helps for tissue repair?
  - Vitamin
  - Fat
  - carbohydrate
  - Protein
- Oxidation number of Mn in  $\text{KMnO}_4$ 
  - +6
  - +5
  - +4
  - +7
- What is the IUPAC name of the following
 
$$\text{CH}_3 - \text{CH}(\text{CH}_3) - \text{CH}_2 - \text{CH}_2 - \text{CH}_3$$
  - 3-methylpentane
  - 2-methylhexane
  - 3-methylhexane
  - 5-methylhexane
- Which of the following is/are type(s) of hydrocarbon
  - saturated hydrocarbons
  - unsaturated hydrocarbons
  - aromatic hydrocarbons
  - all of the above
- What is the number of  $4^\circ$  carbon atoms present in the structure
 
$$\begin{array}{c} \text{CH}_3 \\ | \\ \text{CH}_3 - \text{C} - \text{CH}_3 \\ | \\ \text{CH}_3 \end{array}$$
  - 1
  - 2
  - 3
  - 5





25. The molality of a solution having 18g of glucose (molecular weight = 180) dissolved in 500g of water is:  
a) 0.2 m                      b) 0.1 m  
c) 2.2m                        d) 0.5 m

26. The Van't Hoff factor (i) for a dilute aqueous solution of the strong electrolyte barium hydroxide is:  
a) 0                              b) 1  
c) 2                              d) 3

27. Standard electrode potentials of three metals X, Y, Z are 0.52V, -2.87 V and -0.44 V respectively. The reducing power of these metals are  
a)  $Y > Z > X$                       b)  $X > Y > Z$   
c)  $X > Z > Y$                       d)  $Y > X > Z$

28. The rate constant has unit  $s^{-1}$ . The order is:  
a) 0                              b) 1  
c) 2                              d) 3

29. The oxidation numbers of Ni in  $[Ni(CO)_4]$  and  $[Ni(CN)_4]^{2-}$  respectively are  
a) 0 and +2                      b) 0 and -2  
c) +2 and 0                      d) 0 and 0

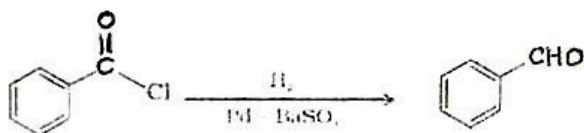
30. All substances that conduct electricity in aqueous solutions are called  
a) electrolytes                      b) acids  
c) buffers                         d) catalyst

31. The most common oxidation state of lanthanide is:  
a) +4                              b) +3  
c) +6                              d) +2

32. What happens when chloroform is left open in air in the presence of sunlight?  
a) explosion takes place  
b) phosgene, a poisonous gas is formed  
c) polymerization takes place  
d) no reaction takes place

33. Wood spirit is known as  
a) ethanol                              b) methanol  
c) propanol                         d) none of these

34. This reaction is called?



- a) Etard's reaction                      b) Stephen reaction  
c) Rosenmund reduction                d) Gatterman - Koch reaction

35. Which one of the following alkyl halides has the lowest boiling point

a)  $CH_3-CH_2-CH_2-CH_2Cl$   
b)  $CH_3-\underset{\substack{| \\ CH_3}}{CH}-CH_2-Cl$

c)  $CH_3-\underset{\substack{| \\ CH_3}}{\overset{\substack{| \\ CH_3}}{C}}-Cl$

d)  $CH_3-CH_2-CH_2-CH_2-CH_2Cl$



36. Which of the following formulae is correct for alkene

- a)  $C_n H_{2n+2}$                       b)  $C_n H_{2n}$   
c)  $C_n H_{2n-1}$                       d)  $C_n H_{2n-2}$

37. Which one of the following is not a primary amine:

- a)  $CH_3-NH-CH_3$   
b)  $CH_3-CH_2-NH_2$   
c)  $CH_3-CH-NH_2$   
          |  
           $NH_2$

- d)  $CH_3-\underset{\substack{| \\ CH_3}}{C}-NH_2$

38. Hinsberg's reagent is used to distinguish between

- a) amines                              b) alcohols  
c) acids                                d) amides

39. Which of the following is not an artificial sweetener?

- a) sucrose                              b) saccharin  
c) sucralose                            d) alitame

40. In nucleic acids, the nucleotides are linked by

- a) ester linkage                        b) amide linkage  
c) peptide linkage                      d) glycosidic linkage

41. Which of the following is not a fundamental physical quantity?

- a) length                              b) mass  
c) time                                d) force

42. At resonant frequency the impedance in series LCR circuit is:

- a) maximum                         b) minimum  
c) zero                                d) infinity

43. The polarity of induced emf is given by

- a) Ampere's circuital law              b) Biot-Savart law  
c) Lenz's law                        d) Fleming's right handrule

44. Temperature at which a ferromagnetic material becomes paramagnetic?

- a) neutral temperature                b) curie temperature  
c) inversion temperature              d) critical temperature

45. A portion of a conductive wire is bent in the form of a semi-circle of radius r as shown below in figure. At the centre of semicircle, the magnetic induction will be



- a) zero                                b) infinity  
c)  $\mu_0 / 2\pi \times i/r$  gauss              d)  $\mu_0 / 4\pi \times i/r$  tesla

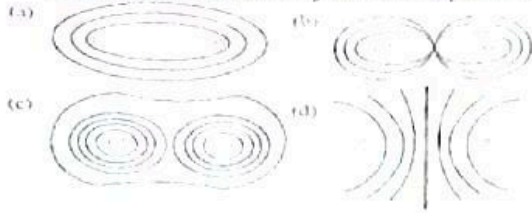
46. A and B are two bulbs connected in parallel. If A is glowing brighter than B, then

- a)  $R_A = R_B$                         b)  $R_A < R_B$   
c)  $R_A > R_B$                         d) none of these

47. Which of the following radiations has the least wavelength?

- a) Gamma rays                        b) X-ray  
c) Microwave                        d) Radiowave

48. Which of the following figure shows the correct equipotential surface of a system of two positive charges?



49. Identify the mismatch in the following

- a) Myopia – concave lens
- b) for rearview – concave mirror
- c) Hypermetropia – convex lens
- d) Astigmatism - cylindrical lens

50. A couple produces:

- a) linear motion
- b) rotational motion
- c) both a and b
- d) neither a nor b

51. According to Boolean postulate which is wrong?

- a)  $0+A = A$
- b)  $0.A = 0$
- c)  $A + \bar{A} = A^2$
- d)  $1.A = A$

52. In helium nucleus there are

- a) 2 protons and 2 electrons
- b) 2 neutron, 12 proton and 2 electron
- c) 2 proton and 2 neutron
- d) 2 positron and 2 proton

53. If an electron in hydrogen atom jumps from an orbit of level  $n = 3$  to an orbit of level  $n = 2$ , emitted radiation has a frequency. ( $R$  = Rydberg's constant,  $C$  = velocity of light)

- a)  $3Rc/27$
- b)  $Rc/25$
- c)  $8Rc/9$
- d)  $5Rc/36$

54. In an AC circuit containing only capacitor (ie, purely capacitive), the current?

- a) leads the voltage by  $180^\circ$
- b) leads the voltage by  $90^\circ$
- c) lags the voltage by  $90^\circ$
- d) none of these

55. The magnetic susceptibility is negative for

- a) paramagnetic material only
- b) ferromagnetic material only
- c) paramagnetic and ferromagnetic materials
- d) diamagnetic material only

56. Match Column I and Column II and choose correct match from the given choices

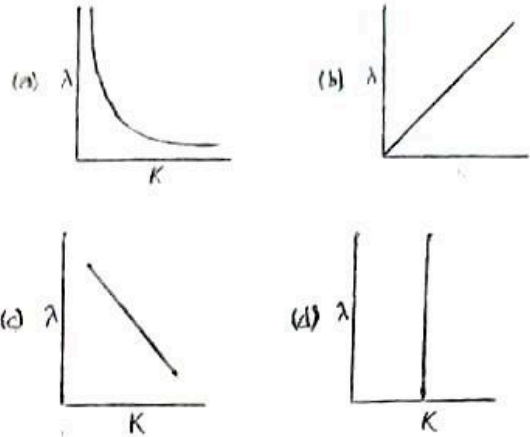
Column I	Column II
i) Root mean square speed of gas molecules	p. $1/3 nmv^{-2}$
ii) pressure exerted by ideal gas	q. $\sqrt{3RT/M}$
iii) Average KE of a molecule	r. $5/2 RT$
iv) Total energy of 1 mole of a diatomic gas	s. $3/2 K_B T$

a) i – r, ii – q, iii – p, iv – s  
 b) i – r, ii – p, iii – s, iv – q  
 c) i – q, ii – r, iii – s, iv – p  
 d) i – q, ii – p, iii – s, iv – r

57. According to Kepler's law of planetary motion, if  $T$  represents time period and  $r$  is orbital radius then for two planets these are related as

- a)  $(T_1 / T_2)^{1/2} = r_1 / r_2$
- b)  $T_1 / T_2 = r_1 / r_2$
- c)  $(T_1 / T_2)^2 = (r_1 / r_2)^3$
- d)  $T_1^2 / T_2^2 = r_1^3 / r_2^3$

58. Identify the graph depicting variation of the de-Broglie wavelength  $\lambda$  of an electron with its kinetic energy ( $K$ )



59. Which of the following gives the value of magnetic field due to a small current element according to Biot-Savart's law?

- a)  $\frac{i \Delta l \sin \theta}{r^2}$
- b)  $\frac{\mu_0}{4\pi} \frac{i \Delta l \sin \theta}{r}$
- c)  $\frac{\mu_0}{4\pi} \frac{i \Delta l \sin \theta}{r^2}$
- d)  $\frac{\mu_0}{4\pi} \frac{i \Delta l \sin \theta}{r^3}$

60. The average power dissipated in a pure inductor is

- a)  $VI^2/4$
- b)  $1/2 VI$
- c) 0
- d)  $VI^2$

61. Which is the primary  $CO_2$  fixation product in  $C_3$  plants

- a) PGA
- b) PEP
- c) OAA
- d) RuBP

62. Match the following

- |                |                                  |
|----------------|----------------------------------|
| 1. Complex II  | - i) NADH dehydrogenase          |
| 2. Complex IV  | - ii) cytochrome bc <sub>1</sub> |
| 3. Complex I   | - iii) Succinate dehydrogenase   |
| 4. Complex III | - iv) cytochrome c oxidase       |
- a) 1 – iii, 2 – iv, 3 – ii, 4 – i  
 b) 1 – iv, 2 – iii, 3 – i, 4 – ii  
 c) 1 – iii, 2 – iv, 3 – I, 4 – ii  
 d) 1 – iv, 2 – iii, 3 – ii, 4 – i

63. \_\_\_\_\_ acts as an antagonist to GAs

- a) auxin
- b) ethylene
- c) cytokinins
- d) abscisic acid

64. The volume of air that will remain in the lungs after a normal expiration

- a) IC
- b) FRC
- c) VC
- d) TLC

65. The hepatic portal vein carries blood from intestine to the \_\_\_\_\_ before it is delivered to the systemic

- a) heart
- b) liver
- c) kidney
- d) pancreas





66. Statement I : Conditional reabsorption of  $\text{Na}^+$  and water takes place in DCT  
Statement II : Angiotensin II is a powerful vasoconstrictor  
a) I – Correct, II – incorrect  
b) both are correct  
c) both are incorrect  
d) II – Correct, I – incorrect
67. The condition of Inflammation of joints due to accumulation of uric acid crystals is known as  
a) Arthritis  
b) tetany  
c) gout  
d) Osteoporosis
68. Name the visible coloured portion of the human eye  
a) Iris  
b) retina  
c) Pupil  
d) Cornea
69. Glucagon produced by the  $\alpha$  cells of human pancreas is a  
a) hypoglycemic hormone  
b) thyroid hormone  
c) hyper calcemic hormone  
d) hyperglycemic hormone
70. Exine of pollen grain is made up of  
a) hemicellulose  
b) cellulose  
c) sporopollenin  
d) pectin
71. Chronic disorder affecting lungs in which alveolar walls are damaged is:  
a) asthma  
b) emphysema  
c) fibrosis  
d) none of these
72. Progesterone is essential for the maintenance of:  
a) myometrium  
b) ectoderm  
c) endometrium  
d) perimetrium
73. Identify the autosomal dominant disorder  
a) myotonic dystrophy  
b) sickle cell anaemia  
c) colour blindness  
d) thalassemia
74. The unequivocal proof that DNA is the genetic material came from the experiment of  
a) Avery, MacLeod and McCarty  
b) Hershey and Chase  
c) Meselson and Stahl  
d) Maurice Wilkins and Rosalind Franklin
75. Heroin is commonly called as  
a) Smack  
b) Opioids  
c) Marijuana  
d) Cocaine
76. Statement I - Cyclosporin A used as an immunosuppressive agent in organ-transplant patients is produced by the yeast *Monascus purpureus*.  
Statement II - *Saccharomyces cerevisiae* is used for commercial production of ethanol.  
a) I – Correct, II – incorrect  
b) both are correct  
c) both are incorrect  
d) II – Correct, I – incorrect
77. The genes *cryIAc* and *cryIIAb* control  
a) corn borer  
b) cotton bollworm  
c) lepidopterans  
d) tobacco budworm
78. The first restriction endonuclease is  
a) Bam HI  
b) Hind III  
c) Hind II  
d) Pvu I

79. The natural reservoir of phosphorous is  
a) sand  
b) atmosphere  
c) ocean  
d) rock
80. Most important cause driving animals and plants to extinction is  
a) Habitat loss and fragmentation  
b) Over exploitation  
c) Alien species invasions  
d) Co-extinctions

Question number 81 to 84 are find correct word and fill in the blanks

81. The shop doesn't sell new books. It only sells old \_\_\_\_\_  
a. \_\_\_\_\_ of them  
b. \_\_\_\_\_ ones  
c. some  
d. them

82. If you want some apples, I'll get you \_\_\_\_\_ at the shop.  
a. any  
b. it  
c. one  
d. some

83. The babysitter will stay there \_\_\_\_\_ we get home  
a. by  
b. for  
c. to  
d. until

84. Are these balls \_\_\_\_\_ sale?  
a. at  
b. for  
c. in  
d. to

Question number 85 to 87 are find the correct alternative word or synonym

85. Entire  
a. Whole  
b. Half  
c. Kind  
d. call
86. Mistake  
a. Common  
b. Endless  
c. Error  
d. narrate
87. emotion  
a. foe  
b. feeling  
c. clear  
d. tall

Question number 88 to 89 are find the correct opposite words.

88. Arrive  
a. depart  
b. future  
c. dismiss  
d. sea
89. natural  
a. right  
b. release  
c. help  
d. artificial



**Question number 90 to 91 are find the correct one word substitution**

90. One who offers his service of his own free will
- plumber
  - architect
  - pilot
  - volunteer
91. An official numbering of the population
- census
  - politics
  - revolution
  - democracy

**Question number 92 to 95 are find the correct word.**

92. Which is correct
- Sylabus
  - Sillabus
  - Silabus
  - syllabus
93. Choose the correct word
- Wulen
  - Wolen
  - Woollen
  - wollen
94. Which is correct
- Gramar
  - Grammar
  - Gremer
  - grammer
95. Choose the correct word
- diarrhoea
  - dirrhoea
  - diehrea
  - dairrecha

**Question number 96 to 97 are fill in the blanks.**

96. Have you \_\_\_\_\_ the car?
- washes
  - wash
  - did wash
  - washed
97. My birthday \_\_\_\_\_ on a Sunday next year.
- is
  - were
  - was
  - has

**Question number 98 to 99 are find the active and passive voice.**

98. Bell invented the telephone.
- The telephone was invented by Bell.
  - The telephone were invented by Bell.
  - The telephone is invented by Bell.
  - The telephones is invented by Bell.
99. Man makes machines.
- Machines were made by man
  - Machines are made by man
  - Machines are makes by men
  - Machine is made by man

**Question number 100 is find the direct- indirect speech.**

100. He said, "I am directing a new film."
- He said that I am directing a new film.
  - He said that he is directing a new film.
  - He said that he were directing a new film.
  - He said that he was directing a new film.

