

# ਬਾਬਾ ਫਰੀਦ ਯੂਨੀਵਰਸਿਟੀ ਆਫ ਹੈਲਥ ਸਾਇੰਸਜ਼, ਫਰੀਦਕੋਟ

03.ਬੀ.ਐਫ. ਯੂ. ਐਚ. ਐਸ./2025/ 620

ਮਿਤੀ: 13/6/2025

## ਜਨਤਕ ਨੋਟਿਸ

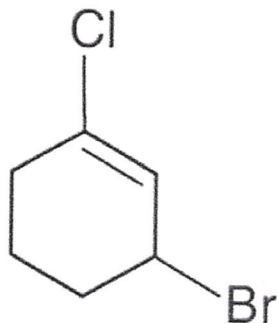
ਬਾਬਾ ਫਰੀਦ ਯੂਨੀਵਰਸਿਟੀ ਆਫ ਹੈਲਥ ਸਾਇੰਸਜ਼, ਫਰੀਦਕੋਟ ਵੱਲੋਂ Basic BSc. Nursing (PPMET-2025) ਦੇ ਦਾਖਲਿਆਂ ਲਈ ਮਿਤੀ 13-06-2025 ਦਿਨ ਸ਼ੁਕਰਵਾਰ (Friday) ਨੂੰ ਪ੍ਰਵੇਸ਼ ਪ੍ਰੀਖਿਆ ਪੰਜਾਬ ਦੇ ਵੱਖ ਵੱਖ ਸ਼ਹਿਰਾਂ ਵਿੱਚ ਬਣੇ ਪ੍ਰੀਖਿਆ ਕੇਂਦਰਾਂ ਵਿੱਚ ਕਰਵਾਈ ਗਈ ਹੈ। ਇਸ ਪੇਪਰ ਦੀ Answer Key/Question Booklet ਯੂਨੀਵਰਸਿਟੀ ਦੀ ਵੈਬ ਸਾਈਟ [www.bfuhs.ac.in](http://www.bfuhs.ac.in) ਤੇ ਅਪਲੋਡ ਕਰ ਦਿੱਤੀ ਗਈ ਹੈ, ਜੇਕਰ ਕਿਸੇ ਵੀ ਉਮੀਦਵਾਰ ਨੂੰ Answer Key ਸਬੰਧੀ ਕੋਈ ਇਤਰਾਜ਼ ਹੋਵੇ ਤਾਂ ਆਪਣੀ login id ਤੇ ਆਪਣਾ ਇਤਰਾਜ਼ ਮਿਤੀ 15.06.2025 ਤੱਕ ਅਪਲਾਈ ਕਰ ਸਕਦੇ ਹਨ। ਇਸ ਤੋਂ ਇਲਾਵਾ ਕਿਸੇ ਹੋਰ email id ਜਾਂ ਕਿਸੇ ਹੋਰ ਤਰੀਕੇ ਨਾਲ ਕੀਤਾ ਗਿਆ ਇਤਰਾਜ਼ ਵਿਚਾਰਿਆ ਨਹੀਂ ਜਾਵੇਗਾ।

ਉਪਰੋਕਤ ਦਿੱਤੇ ਗਏ ਸਮੇਂ ਤੇ ਬਾਅਦ ਵਿੱਚ ਪ੍ਰਾਪਤ ਹੋਏ ਇਤਰਾਜ਼ ਵਿਚਾਰੇ ਨਹੀਂ ਜਾਣਗੇ ਅਤੇ ਪ੍ਰਾਪਤ ਹੋਏ ਇਤਰਾਜ਼ਾਂ ਦਾ ਨਿਪਟਾਰਾ ਕਰਨ ਤੇ ਬਾਅਦ ਉਪਰੋਕਤ ਪ੍ਰੀਖਿਆ ਦਾ ਨਤੀਜਾ ਘੋਸ਼ਿਤ ਕੀਤਾ ਜਾਵੇਗਾ।

ਨੋਟ: ਡਾਕ ਰਾਹੀਂ ਪ੍ਰਾਪਤ ਹੋਏ ਇਤਰਾਜ਼ ਪ੍ਰਵਾਨ ਨਹੀਂ ਕੀਤੇ ਜਾਣਗੇ।

  
ਰਜਿਸਟਰਾਰ

- What is the mass of carbon dioxide which contains the same number of molecules as are contained in 40 grams of oxygen?
  - 40 g
  - 55 g
  - 32 g
  - 44 g
- What is the atomic number of an element which has  $3d^6$  as its outermost configuration?
  - 12
  - 32
  - 26
  - 24
- Ionization enthalpy of nitrogen is more than oxygen because of:
  - extra stability of half filled orbitals
  - more number of energy levels.
  - Less number of valence electrons.
  - Smaller size.
- Which of the following pairs are isostructural?
  - $\text{SO}_4^{2-}$  and  $\text{BF}_4^-$
  - $\text{NH}_3$  and  $\text{NH}_4^+$
  - $\text{CO}_3^{2-}$  and  $\text{CO}_2$
  - $\text{CH}_4$  and  $\text{BF}_3$
- In general, for exothermic reactions to be spontaneous
  - temperature should be high
  - temperature should be zero
  - temperature should be low
  - temperature has no effect
- According to Lewis concept, an acid is a/an
  - proton donor
  - electron pair donor
  - proton acceptor
  - electron pair acceptor
- Addition of oxygen to an element or compound is termed as
  - Oxidation
  - Reduction
  - Ionisation
  - redox reaction
- The IUPAC name of the compound shown below is



- 2-bromo-6-chlorocyclohex-1-ene
  - 6-bromo-2-chlorocyclohexene
  - 3-bromo-1-chlorocyclohexene
  - 1-bromo-3-chlorocyclohexene
- An inhibitor is described as
    - a substance that slows down or stops a reaction
    - a substance which inhibits the properties of a catalyst
    - substance formed during the reaction and does not participate in the reaction
    - a substance which prevents formation of products in a reaction being most reactive

- The law which indicates the relationship between solubility of a gas in liquid and pressure is
  - Raoult's law
  - Henry's law
  - lowering of vapour pressure
  - Van 't Hoff law
- Standard hydrogen electrode has a zero potential because
  - hydrogen can be most easily oxidised
  - hydrogen has only one electron
  - the electrode potential is assumed to be zero
  - hydrogen is the lightest element
- When chemical reaction takes place, during the course of the reaction the rate of reaction
  - keeps on increasing with time
  - Remains constant with the time
  - Keeps on decreasing with the time
  - Shows irregular trend with time
- Transition metals make the most efficient catalysts because of their ability to
  - adopt multiple oxidation States and to form complexes
  - form coloured ions
  - show paramagnetism due to unpaired electrons
  - form a large number of oxides
- Which of the following is not a neutral ligand
  - $\text{H}_2\text{O}$
  - $\text{NH}_3$
  - $\text{ONO}$
  - $\text{CO}$
- Which of the following compounds will have highest melting point?
  - Chlorobenzene
  - o*-Dichlorobenzene
  - m*-Dichlorobenzene
  - p*-Dichlorobenzene
- Which of the following is not a characteristic of alcohol?
  - They are lighter than water
  - Their boiling points rise fairly uniformly with rising molecular weight
  - Lower members are insoluble in water and organic solvents but the solubility regularly increases with molecular mass
  - Lower members have a pleasant smell and burning taste, higher members are colourless and tasteless.
- Choose the correct statement regarding the physical properties of carbonyl compounds
  - All aldehydes are insoluble in benzene
  - Higher aldehydes are more fragrant
  - n*-Butane has more boiling point than acetone
  - methanal and propanone are immiscible with water in all proportions
- Secondary amines can be prepared by
  - Reduction of Nitro compounds
  - Reduction of amides
  - Reduction of isonitriles
  - Reduction of nitriles

19. Carbohydrates are stored in human body as the polysaccharide
- Starch
  - Glycogen
  - Cellulose
  - Amylose
20. Which of the following statements is not true?
- Glucose and fructose both are monosaccharides
  - the natural glucose and fructose are D-forms
  - the solution having equal molecules of D-glucose and D-fructose is termed as invert sugar
  - Aldohexoses exist in  $2^6$  optical forms
21. Which of the following is not a unit of British system of units?
- Foot
  - Metre
  - Pound
  - Second
22. A cricketer can throw a ball to a maximum horizontal distance of 100 m. With the same speed how much high above the ground can the cricketer throw the same ball?
- 50 m
  - 100 m
  - 150 m
  - 200 m
23. A book is lying on the table. What is the angle between the action of the book on the table and the reaction of the table on the book?
- $0^\circ$
  - $45^\circ$
  - $90^\circ$
  - $180^\circ$
24. An animator which can carry a maximum load of 1800 kg (elevator + passengers) is moving up with the constant speed of  $2 \text{ m s}^{-1}$ . The frictional force opposing the motion is 4000 N. What is maximum power in kilowatts delivered by the motor to the elevator?
- 22
  - 44
  - 66
  - 88
25. A solid sphere rolls down two different inclined planes of the same heights but different angles of inclination. In both cases
- the speed and time of descent will be the same
  - the speed will be the same but the time of descent will be different
  - the speed will be different but time of descent will be the same
  - speed and time of descent both are different
26. Black hole is
- super surface of atmosphere
  - ozone layer
  - Super dense planetary material
  - none of these
27. Pressure at point inside a liquid does not depend on
- The nature of the liquid
  - Shape of the container
  - The depth of point below the surface of the liquid
  - acceleration due to gravity at that point
28. There is no net flow of heat between two systems when they are in contact, then they are said to be in,
- Thermal equilibrium
  - stable equilibrium
  - unstable equilibrium
  - none of these
29. Which of the following is an oscillatory motion?
- Rotation of the Earth about its axis
  - A freely suspended bar magnet displaced from its N-S direction and release
  - The piston in steam engine moves back and forth inside a cylinder
  - An arrow released from a bow
30. Velocity of sound in vacuum is
- Zero
  - $330 \text{ m s}^{-1}$
  - $360 \text{ m s}^{-1}$
  - $660 \text{ m s}^{-1}$
31. Which of the following statements is false for a perfect conductor?
- The surface of the conductor is an equipotential surface
  - The electric field just outside the surface of a conductor is perpendicular to the surface
  - the charge carried by a metallic sphere is always uniformly distributed over its surface
  - none of these
32. In parallel combination of n cells, we obtain
- more voltage
  - more current
  - less voltage
  - less current
33. Which of the following is not correct about the magnetic lines?
- The magnetic field lines of a magnet form continuous closed loop
  - the tangent to the field line at a given point represents the direction of the net magnetic field B at that point
  - the larger the number of people lines crossing per unit area, a stronger is the magnitude of the magnetic field B
  - the magnetic field lines may intersect to each other in certain conditions
34. A circular copper disk 10 cm in diameter rotates at 1800 revolutions per minute about an axis through its centre and at right angle to disc. A uniform field of  $1 \text{ Wb m}^{-2}$  is perpendicular to disc. What potential difference is developed between the axis of the disc and the rim?
- 0.023 V
  - 0.23 V
  - 23 V
  - 230 V
35. If a variable frequency AC source is connected to a capacitor then with decrease in frequency, the displacement current will be
- Increased
  - Decreased
  - remains constant
  - first decrease then increase
36. Converging lens is used to form an image on a screen. When the upper half of the lens is covered by an opaque screen
- half the image will disappear
  - complete image will disappear
  - intensity of image will decrease
  - intensity of image will increase



37. Who established that electric charges quantised?
  - a. JJ Thomson
  - b. William Crookes
  - c. RA Millikan
  - d. Wilhelm Roentgen
38. In Geiger Marsden experiment, Find the distance of closest approach to the nucleus of a 7.7 MeV  $\alpha$  particle before it comes momentarily to rest and reverses its direction. (Z for gold nucleus = 79)
  - a. 10 fm
  - b. 20 fm
  - c. 30 fm
  - d. 40 fm
39. Light energy emitted by star is due to
  - a. breaking of nuclei
  - b. joining of nuclei
  - c. burning of nuclei
  - d. reflection of solar light
40. Potential barrier developed in a junction diode opposes the flow of
  - a. minority carrier in both regions only
  - b. majority carriers only
  - c. electrons in p region
  - d. holes in p region
41. A living organism is unexceptionally differentiated from a non-living structure on the basis of
  - a. Reproduction
  - b. Growth and movement
  - c. Interaction with the environment
  - d. Responsiveness
42. Select the pair that consists of viral diseases
  - a. Mumps and small pox
  - b. Herpes and influenza
  - c. Cholera and typhoid
  - d. Both a and b
43. Which cannot be described by floral diagram and floral formula?
  - a. Symmetry of flower
  - b. Type of aestivation
  - c. Adhesion of floral part
  - d. Type of venation
44. Conjoint and closed vascular bundles are found in
  - a. Sunflower stem
  - b. Maize stem
  - c. Cucumber root
  - d. All of these
45. Cardiac muscles are different from voluntary muscles as they are
  - a. Smooth
  - b. Voluntary
  - c. Striated
  - d. Involuntary
46. Centrosome is found in
  - a. Chromosomes
  - b. Nucleus
  - c. Cytoplasm
  - d. Nucleolus
47. The number of chromosomes is reduced to half during
  - a. Mitosis
  - b. Meiosis II
  - c. Meiosis I
  - d. Fertilization
48. During photorespiration, there occurs
  - a. Synthesis of sugars
  - b. Utilization of ATP
  - c. Synthesis of ATP
  - d. Synthesis of NADPH
49. During complete metabolism of glucose, the number of ATP formed is
  - a. 2
  - b. 12
  - c. 38
  - d. 27
50. To speed up the malting process in brewing industry, the growth hormone used is
  - a. Auxin
  - b. Gibberellin
  - c. Kinetin
  - d. Ethylene
51. The Oxygen Dissociation Curve is
  - a. Parabola
  - b. Slope
  - c. Sigmoid curve
  - d. Straight line
52. The removal of calcium from freshly collected blood would
  - a. Cause delayed clotting
  - b. Prevent clotting
  - c. Cause immediate clotting
  - d. Prevent destruction of Haemoglobin
53. The colour of urine in healthy individuals is
  - a. White
  - b. Reddish yellow
  - c. Light yellow
  - d. Brown
54. In humans, at the end of first meiotic division, the male germ cells differentiate into
  - a. Spermatids
  - b. Spermatogonia
  - c. Primary spermatocytes
  - d. Secondary spermatocytes
55. Each of us is a part of the ongoing evolution of the species. Which of the following occurrences would have the greatest impact on the future biological evolution of the human population?
  - a. A mutation occurs in one of your sperm or egg cells
  - b. You do exercise every day so that you stay physically fit and healthy
  - c. You move to Kerala, the state of highest medical facilities and literacy
  - d. You encourage your children to develop their intellectual abilities
56. A recessive allele is expressed in
  - a. Heterozygous condition only
  - b. Homozygous condition only
  - c. F3 generation
  - d. Both homozygous and heterozygous condition
57. Marijuana is extracted from
  - a. Dried leaves of *Cannabis sativa*
  - b. Ergot fungus
  - c. Roots of hemp plant
  - d. Cocoa plant
58. A plant cell without cell wall is called
  - a. Proplast
  - b. Protoplast
  - c. Nucleoplasm
  - d. Explant

59. Conservation of species in their natural habitat is
- In situ
  - Ex situ
  - Off site
  - Cryopreservation
60. Which of these is not a part of physical environment?
- Temperature
  - Light
  - Organisms
  - Humidity.
61. These days \_\_\_ beautiful.
- Am
  - Is
  - Be
  - Are
62. If you knew the answers, why \_\_\_ you tell me?
- Don't
  - Hadn't
  - Didn't
  - Hasn't
63. Yesterday, I \_\_\_ to the shops with my mum.
- Will go
  - Went
  - Was going
  - Walk
64. Furniture \_\_\_ generally made from wood.
- Have
  - Had
  - Is
  - Are
65. You can not have \_\_\_ mangoes as they are rotten.
- Many
  - That
  - These
  - Their
66. The team \_\_\_ playing well.
- Have
  - Are
  - Is
  - Has
67. Prince \_\_\_ for ten hours, but he still \_\_\_ half of the distance by then.
- Is driving/has not been covering
  - Has been driving/did not cover
  - Was driving/did not cover
  - Had been driving/had not covered
68. Identify the suitable infinitive for the given word: sleeping
- To asleep
  - To be slept
  - To sleep
  - To sleeping
69. Choose the word which best expresses the antonym of **morbid**.
- Healthy
  - Liberal
  - Progressive
  - Stale
70. Choose the correct synonym of **transparency**.
- Opacity
  - Clarity
  - Vagueness
  - Cloudiness
71. Choose the correct answer to the homophone: My grandmother has a great deal of common \_\_\_\_.
- Since
  - Sense
  - Sins
  - Sinse
72. Does he feel like \_\_\_ now?
- Swimming
  - To swim
  - Swim
  - To go swimming
73. Identify the complex sentence.
- I know his residence.
  - I know where he resides.
  - He stole the money and he denied.
  - All of the above.
74. Identify the type of the following sentence. Her name is Praveena, and she comes from India.
- Complex
  - Complex-compound
  - Compound
  - Simple
75. Select the most appropriate option to fill in the blank. The doctor directed the nurse to administer an \_\_\_ medicine to the patient.
- Official
  - Eminent
  - Alternative
  - Insightful
76. Change the voice. The lock has not yet been repaired by the locksmith.
- The locksmith has not repaired the lock yet.
  - The locksmith is not repairing the lock yet.
  - Both a and b.
  - None of the above.
77. Select the correctly spelt word.
- Contemporary
  - Contemperary
  - Contemporary
  - Contemparey
78. Read the sentence to find out whether there is any grammatical error in it. The error, if any, will be in one part of the sentence. Choose that part of the sentence. Reshma was (a)/ a daily wage worker(b)/who gone to work(c)/despite having a high fever(d).
- (a)
  - (b)
  - (c)
  - (d)
79. Give one word for the following A family of young animals
- Nest
  - Brood
  - Offspring
  - Clutch
80. Select the most appropriate meaning of the underlined idiom Information technology has developed by leaps and bounds.
- At a rapid pace
  - Through unfair means
  - Very gradually
  - In far off places
81. Which of the following is NOT an attribute of a professional?
- Concerned with quantity
  - Self-directed
  - Committed to spirit of inquiry
  - Independent

82. Florence Nightingale was born in----
- Germany
  - Britain
  - France
  - Italy
83. The country where Sushruta was born
- China
  - Egypt
  - India
  - Babylonia
84. Which of the following does not govern nursing practice?
- Indian Nursing Council
  - All India Council for Technical Education
  - Indian Penal Code
  - Punjab Nursing Council
85. A nurse plays all major roles except
- Prescribing drugs
  - Medication administration.
  - Patient assessment.
  - Educating patient.
86. Which of following is NOT a role of Indian Nursing Council?
- To provide uniformity in nursing education.
  - To train physician.
  - To ensure the maintenance of quality of nursing practice.
  - To setting standards in nursing education.
87. Which of following medical diagnosis tool is used to assess the rhythm of heart?
- Electroencephalogram
  - Electromyography
  - Electrocardiogram
  - Electrocauterization
88. Which of following is NOT a major social cause of health problems?
- Lack of safe water.
  - Population explosion.
  - Inadequate financial sources.
  - Equal distribution of resources.
89. An outbreak of infectious disease that occurs over a wide geographical area and that is of high prevalence, generally affecting a significant proportion of the world's population is called?
- Pandemic
  - Epidemic
  - Endemic
  - Epizootic
90. Disaster Management includes:
- Mitigation
  - Reconstruction
  - Rehabilitation
  - All of the above
91. When is world health day celebrated?
- January 1st
  - March 8th
  - April 7th
  - June 15th
92. What is the theme for World Health Day 2025?
- "My Health, My Right"
  - "Healthy Beginnings, Hopeful Futures"
  - "Strengthening Indian Healthcare for a Resilient Future"
  - "Global Health for All"
93. Minimum standards for nursing education are set by
- Trained nursing association of India
  - Indian Nursing council
  - University grant commission
  - All India Council for Technical Education
94. A nurse overhears another staff member speaking disrespectfully about a patient. What is the most appropriate action for the nurse to take?
- Report the incident to a supervisor
  - Confront the staff member in front of the patient
  - Ignore the incident and continue working
  - Discuss the incident with other colleagues
95. What is the common route of transmission for typhoid fever?
- Blood transfusion
  - Direct skin contact
  - Faecal oral route
  - Airborn transmission
96. Which of the following is an example of a communicable disease?
- Diabetes
  - Tuberculosis
  - Hypertension
  - Osteoporosis
97. Which of the following is a non-communicable disease?
- Influenza
  - Cholera
  - Cancer
  - Measles
98. Which of following disease is caused by a deficiency of vitamin D?
- Scurvy
  - Rickets
  - Cholera
  - Typhoid
99. The specialty that focuses on the treatment of cancer diseases and conditions is called:
- Neurology
  - Ophthalmology
  - Oncology
  - Gastroenterology
100. The specialty focused on the diagnosis and treatment of skin diseases is called:
- Dermatology
  - Ophthalmology
  - Neurology
  - Endocrinology



# PPMET 2025 Answer Key

Chemistry		Physics		Biology		English		Aptitude for Nursing	
Q. No.	Answer	Q. No.	Answer	Q. No.	Answer	Q. No.	Answer	Q. No.	Answer
1	B	21	B	41	D	61	D	81	A
2	C	22	D	42	D	62	C	82	D
3	A	23	D	43	D	63	B	83	C
4	A	24	B	44	B	64	C	84	B
5	C	25	B	45	D	65	C	85	A
6	D	26	C	46	C	66	C	86	B
7	A	27	B	47	C	67	D	87	C
8	C	28	A	48	B	68	C	88	D
9	B	29	C	49	C	69	A	89	A
10	B	30	A	50	B	70	B	90	D
11	C	31	D	51	C	71	B	01	C
12	C	32	B	52	B	72	A	92	B
13	A	33	D	53	C	73	B	93	B
14	C	34	B	54	D	74	C	94	A
15	D	35	B	55	A	75	C	95	C
16	C	36	C	56	B	76	A	96	B
17	B	37	C	57	A	77	C	97	C
18	C	38	C	58	B	78	C	98	B
19	B	39	B	59	A	79	B	99	C
20	D	40	B	60	C	80	A	100	A